



**“JETTING CUM
SUCTION MACHINE
WITH DETACHABLE
MINI SUPER
SUCKER”.**



Hydraulically
Operated Manhole
De-silter

(Rodding Machine
OPTIONAL)

Super Sucker
Machine

Jetting & Super
Suction Tank with
4" & 6" Inlet
Connection



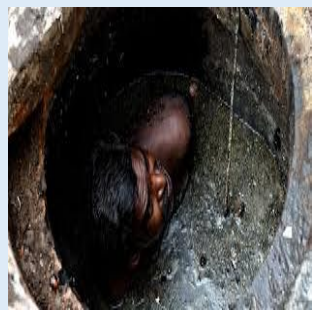
Super Sucker
Machine

1200 LITERS JETTING CUM SUCTION TANK MOUNTED ON THE MINI SUPER SUCKER ALONG-WITH ITS 6000 LITERS JETTING CUM SUCTION PROVIDING A DUAL FUNCTION.



JETTING CUM SUCTION MACHINE MOUNTED ON TRACTOR DI 255 OR MAHINDRA BOLERO MAXI.

SR. NO.	DETAILS	DESCRIPTION
1.	JETTING CUM SUCTION MACHINE	Pump
2.		Engine
3.		Water Tank
4.		Hose Reels
5.		Jetting Pressure Suction
6.		Pipe Valve
7.		Pressure Valve & Material
8.		GPS for vehicle monitoring
9.		Water Level Indicator
10.	HYDRAULICALLY OPERATED DE-SILTER	Boom Weight Capacity
		Boom Control
		Operable Direction
		Wire Shaft
		Support Guiders
		Stand-in Plates
11.		Pick-Up Bucket with Capacity
12.		Operating Mechanism
13.		Depth Power
14.		Collection & Tipping
15.	Oil Tank	
16.	Hose Reels	
17.	RODDING MACHINE	BOOM MOVEMENT
18.		Placement
19.		Rods
20.		Length & Quantity
21.		Movement
22.	CAMERA SYSTEM	Inclusions
		Continuous Visual Display
23.	WORK STATION	Engine {Kirloskar}
		Compressor.
		Tank Capacity
		Air Filter.
		PVC Hose Pipe
24.	GPS	COMPUTER INTERFACE
25.	ADD- ONS	SAFETY EQUIPMENT



NALACLEANER

EFTS for all these years has worked extensively towards giving solutions for activities required human involvement for cleaning of manholes etc., the latest innovation “NALACLEAN”, is a unique machine designed for efficient cleaning of road side open drains. Road side open drains were conventionally cleaned manually or by Back-Hoe loaders (Like JCBs) which are designed for digging. In Back –Hoe loader the operator is sitting in center of the machine off-set to the drain making it vulnerable of breaking the side walls if misjudge or loses control. More over the silt removed from the drains is dumped on the ground and collected by another agency.

The machine (**ROAD SIDE OPEN DRAIN DITCH CLEANING MACHINE TIPPER TYPE**) is available on trailer chassis towed by min. 35 HP tractor, on 4-wheeler Jeep Vehicle and also on heavy Truck Chassis. The power required for hydraulic operation is taken from Tractor’s P.T.O through propeller joint. Similarly for the Machines mounted on Jeep or Truck Chassis, the required power is taken from Vehicle’s engine through P.T.O. The function is fully hydraulic, operated through lever controlled valve provided near the operator’s seat. The telescopic side box section can be extended hydraulically for better reach and visibility of the ditch / Nalas. The boom has a 90° (degree) angle and is attached with ditch bucket of approximately 50 liters for collection of silt / mud / sediment and is directly emptied in to the trailer bod yattached with the chassis / vehicle as the case may be. This reduces / eliminates the process of re-handling of the collected silt. The collected silt can be dumped / emptied hydraulically at the dumping site.

PERFORMANCE								
1	DEPTH BELOW GROUND LEVEL	1.5 M	2	Outreach	3.3 M	3	Lifting Height	4.40 M
4	LATERAL BOX EXTENSION	0.8 M	5	Bucket Capacity	0.05 CU M.			
TECHNICAL SPECIFICATIONS								
1.	General	Specially designed open ditch cleaning machine drawn by trailer capable to clean open drain. The silt collected by the bucket is directly emptied into the trailer body so that the re handling of silt is avoided.						
2.	Base Structure	Side hoe type box section arrangement having hydraulic telescopic boom extension up to max 800 mm.						
3.	Boom/Column	Made from MS box section pivoted with wide pivot bushes and pins. The whole structure is mounted on heavy duty turn table assembly.						
5.	Hy. Cylinder	Double acting hydraulic cylinders having precision honed M.S tubes and induction hardened deep grounded chrome plated piston rods providing smooth operation, long steel life and resistance against corrosion.						
6	Drive	Hydraulic pump drive is taken by tractors PTO through universal joint via imported make gear box.						
7.	Gear box	Imported make	Input rpm-540	Power-20 kW	Ratio-1:3			
8.	Controls	Lever operated controls are provided near operator’s seat.						
9	Stabilizer	Hydraulic operated stabilizer						
10.	Slewing	90 degree slewing by hydraulic operated double acting cylinder						
11.	Lateral Box Ext.	Hydraulic box extension with precise adjustable type cast nylon setting on sides and bottom of the box. Inside box 200x200 mm						
TRAILER SPECIFICATIONS								
12.	Body Capacity	3 cu .m						
13.	Material	Floor : 3.0mm MS sheet	Floor : 3.0mm MS sheet	Door : 1.6mm MS sheet				
14.	Base Frame	150x75 mm channel section chassis.						
15.	Tyre	7.50 x16 size -2 nos.						
16.	Axel	75x75 mm MS square						
17.	Brake	Parking & service type, Hand operated internal expanding, shoe brake acting on both wheels.						
18.	Accessories	Mudguard			Back/brake light			
		Reflector-2 Nos			Parking jack			
		Operator’s seat			Lateral box tightening arrangement			
		Steps to climb the operator’s seat			Dead weight box for counter balance.			

**OPEN DRAIN /
OPEN NALA
CLEANER**

